



## THE DIRT ON DIRT

Composting is a simple yet powerful way to transform food scraps into something beautiful - healthier soil, greener gardens, and a reduction in waste sent to landfills. Applying compost to your garden beds, lawns, and potted plants enhances plant establishment and growth, suppresses weeds, pests, and diseases, reduces soil density and compaction, and improves soil water-holding capacity and retention.

### CHRISTMAS TREE DISPOSAL

WM customers may place outside, next to their waste cart, undecorated, non-plastic Christmas trees cut in sections no greater than four feet (not weighing more than 50 lbs.) the first two weeks in January for collection.

### KEEP COMPOST CLEAN AND CONTAMINANTS OUT

Reduce compost contaminants by disposing of the following items **in your trash cart** and not your organic waste cart:

- Plastic Shopping and Produce Bags, Straws, Utensils, and Plates (even if the items marked as recyclable, biodegradable, or compostable)
- Pet Waste and Litter
- Diapers (cloth or disposable)
- Coated Cardboard (Ex. cereal box)
- Disposable Coffee Cups & Ice Cream Containers (if they are lined with plastic)
- Plastic Film (Saran wrap, package wrap)
- Textiles, Fabric, Clothing
- Wrappers, Packaging, and Stickers
- Ashes (place bagged in your trash cart)



# It's the Law: Mandatory Organic Waste Recycling

You can help reduce waste and landfill methane gas emissions by properly preparing your organic waste.

## What Goes in the Organics Cart:



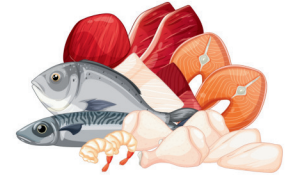
FOOD WASTE



YARD WASTE



FOOD SOILED PAPER  
& CARDBOARD



MEAT, FISH & POULTRY



### DO NOT INCLUDE:

PET WASTE  
PLASTIC BAGS  
SERVEWARE/UTENSILS  
PLASTIC CONTAINERS  
FOAM CONTAINERS  
HAZARDOUS WASTE



BREAD, PASTA, RICE, GRAINS,  
& COFFEE GROUNDS



DAIRY



**Tip:** Store food waste in a container with a lid in the refrigerator or freezer until placed in your organics cart

Contact WM with your organic waste recycling questions:  
[shastacountyorganics@wm.com](mailto:shastacountyorganics@wm.com)  
or call 530-999-6045



## 15 ITEMS YOU CAN COMPOST

BUT MIGHT NOT THINK TO



- Cork
- Pet Food
- Nutshells
- Paper Filters
- Sawdust
- Eggshells
- Hay & Straw
- Avocado Pits
- Coffee Grounds
- Herbs & Spices
- Paper Towels
- Aquarium Plants
- Paper Egg Carton
- Popsicle Sticks
- Freezer Burnt Food

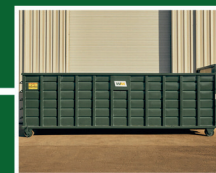
## DUMPSTER RENTALS

Need a temporary dumpster rental? From one-time cleanups to jobs requiring multiple hauls, WM has roll-off dumpsters for any project.



### Residential

Junk in the attic or around the house? Time to complete your fixer-upper project? Getting ready to sell?



### Commercial

WM Commercial dumpster rentals can accommodate cleanups of any scale or type.



### Construction

Don't worry about those drywall scraps or roofing shingles. Keep your construction site free of debris with a sturdy roll-off dumpster from WM.

Contact WM to Learn More: 800-479-8101

Please direct newsletter comments to:  
Shasta County Department of Resource Management  
1855 Placer Street, Suite 200, Redding, CA 96001  
[recycle@shastacounty.gov](mailto:recycle@shastacounty.gov)  
(530) 225-5789 or (800) 528-2850



Please direct disposal service calls to:  
WM  
8592 Commercial Way, Redding, CA 96002  
[www.wm.com](http://www.wm.com)  
(800) 479-8101 or (530) 221-4784

Trash Talk is printed on recycled paper.